

# OSCON 2022

## Openspecimen- User Experiences

Jenna Bowen– Business Operations Manager

NSW Regional Biospecimen and Research Services  
University of Newcastle

[Jenna.R.Bowen@Newcastle.edu.au](mailto:Jenna.R.Bowen@Newcastle.edu.au)



**NSW Regional  
Biospecimen &  
Research Services**



**Health  
Pathology**

# A little about us

- Formally established in 2012
- Located at Hunter Medical Research Institute
- Openspecimen users since early 2015

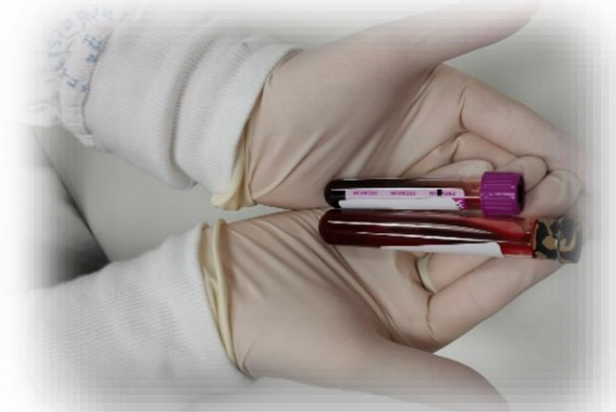


**OPENSPECIMEN**  
a krishagni product

# Growth

2015:

- Internal cohort of cancer related biospecimens- sequential blood collections
- 1 collection protocol



2022:

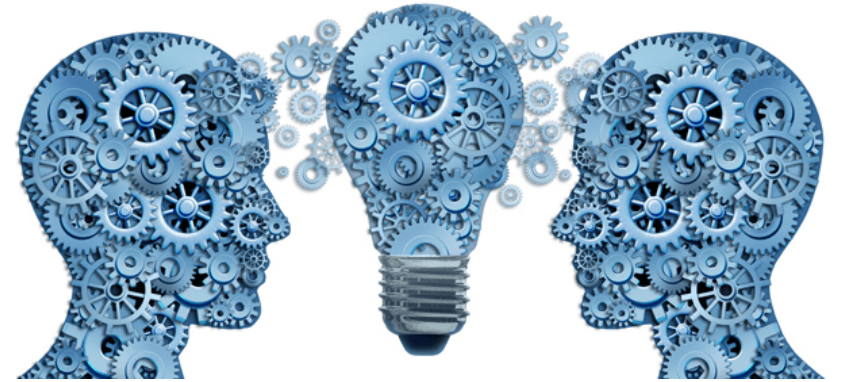
- Facilitating protocol driven collections for local research groups
- Partnered with a number of collaborative and industry trial groups to process, catalogue and store trial samples
- Long-term or interim storage of biospecimens
- 90+ collection protocols and 145,000+ samples banked



**NSW Regional  
Biospecimen &  
Research Services**

# Users

- Daily use by lab processing staff
  - Catalogue processed samples, including specimen data entry
    - Forms created for additional data entry
  - Sample inventory audits- manage human error
  - Transfer of containers to long term storage
  - Distribution of samples to researchers
- *Testing environment* for version updates prior to going 'live'
  - Test new version features
  - Training of staff regarding Openspecimen functionality
  - Test a new process to determine any detrimental effects on system data



# Users

- Creating user accounts for collaborative groups/sample owners to access their own trial samples
  - Different levels of access
  - Look at sample numbers in real time
  - Able to do own queries and reporting
    - Creation of routinely run queries, use of shared query folders
- **Training workshops** for internal staff and external partners covering
  - Openspecimen navigation
  - Building and running queries
  - Openspecimen support centre- user manual



<https://openspecimen.atlassian.net/wiki/spaces/CAT/overview?homepageId=1115727>

# Areas for Improvement

- Querying across multiple collection protocols that have the same form attached at the same level and having the ability to export the query data
  - Avoid having to run separate queries and merging spreadsheets
  - Time consuming
  - Risk of human error

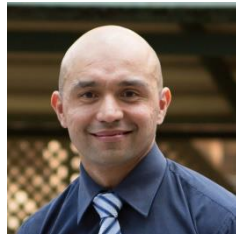


# Our Team

## Leadership Team



L Prof Rodney Scott  
Co-director



Dr Ricardo Vilain  
Biobank Co- director  
Biobank Pathologist



Dr Jude Weidenhofer  
Co-director



Cassandra Griffin  
Biobanking and Clinical  
Research Manager



## Technical Team



Trish Collinson  
Biological Repository  
Manager – sample  
logistics



Jenna Bowen  
Business Operations  
Manager – finance and  
reporting



Megan Clarke  
Specialist Senior  
Technician –  
histology  
secondment



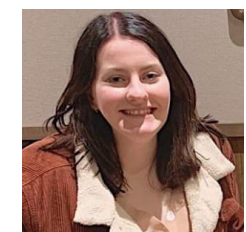
Melissa Tooney  
Research  
Co-Ordinator –  
internal sample  
provision



Samara Bray  
Lab Technician and  
participant  
coordinator



Belinda Van Zyl  
Lab technician –  
cooperative trial group  
processing



Kaylee O'Brien  
Lab Technician –  
HNE trials  
management

# Acknowledgements

- AXT
- Openspecimen team
- University of Newcastle
- Hunter Medical Research Institute



NSW Regional  
Biospecimen &  
Research Services



OSCON22  
OpenSpecimen Users Conference

